

Marvellous Merton

Year Four Knowledge



The River Wandle flows through the London Boroughs of Croydon, Sutton, Merton and Wandsworth where it joins the River Thames.



The River Wandle's main sources are from chalk springs along the foothills of the North Downs around the Carshalton and Croydon areas, although several of these are now dried up.



In 1805 the Wandle was described as "the hardest worked river for its size in the world" due to the numerous water mills along it.



The surrounding landscape of the Wandle is low-lying and mostly urban, but the river passes through many green spaces.



Throughout the 17th, 18th and 19th centuries it became heavily industrialised, supporting the manufacture of textiles, paper and tobacco, with as many as 68 mills along its length.



As a result of industrialisation, the river suffered from severe pollution and for many years was considered to be ecologically dead. There has been a considerable effort to clean up the river and make it healthy again.



In 1881 William Morris was looking for a site where his workers could enjoy pleasant countryside surroundings. He found the 9-acre site at Merton Abbey, next to the Wandle. The site had a history of printing because the Wandle was perfect for washing fabrics.



In 1904 Sir Arthur Liberty used Little's Print Works at Merton Abbey to print his fabrics. Liberty imported silks from the Far East, they became so popular that he started printing them in Merton.

Around the World in 80 Days

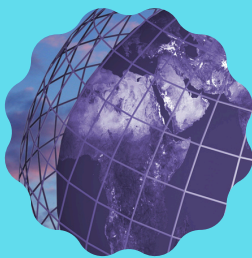
Year Four Knowledge



The Tropic of Cancer is an imaginary latitude line above the equator that runs across the globe at about 23 degrees north, while the Tropic of Capricorn is an imaginary latitude line below the equator whose latitude line circles the globe at about 23 degrees south.



The Earth's Equator is the imaginary line that runs around the centre of the globe at 0 degrees latitude. It is the longest of Earth's five circles of latitude. This is because of how the Earth bulges around its centre.



We use imaginary lines to help locate where a place is in the world. We use lines of latitude to find out how far north or south a place is. These lines run parallel to the Equator. We use lines of longitude to find out how far east or west a place is. These lines run from the top of the Earth to the bottom.



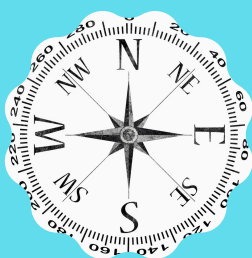
It takes 24 hours for the Earth to rotate once on its axis. We split the globe into time zones using imaginary lines called meridians. They run from the North Pole to the South Pole, crossing lines of latitude. There are 24 time zones.



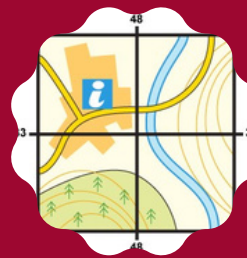
There is an imaginary line running through the UK called the Prime Meridian. It runs through a place in London called Greenwich. The Prime Meridian splits the world into eastern and western hemispheres.



Time in countries to the east of the Prime Meridian is always in front of that in the UK. Time in countries to the west of the Prime Meridian is always behind that of the UK.



The four cardinal directions are North (N), East (E), South (S), West (W). The four ordinal directions are Northeast (NE), Southeast (SE), Southwest (SW) and Northwest (NW).



A grid of squares helps the map-reader to locate a place. The vertical lines are called eastings. They are numbered - the numbers increase to the east. The horizontal lines are called northings as the numbers increase in a northerly direction.

Year 4

Geographical Skills



I can identify the different hemispheres on a map and talk about them in relation to the equator and tropics of cancer and capricorn.



I can use and explain the term 'climate zone' and Discuss and compare climate zones.



I can begin to ask questions about global warming and research the implications.



I can use maps to locate features in the UK such as rivers, mountains and large cities.



Ask geographical questions eg. How was the land used in the past? How has it changed? What made it change? How could it continue to change?



I can use four figure grid references, use the 6 points of a compass and make plans and maps using symbols and keys.



I can recognise that people have differing qualities of life living in different locations and environments.



I can write reports on land use and economic activity and how natural resources are used.



I can find out about places and the features in the places by looking at information sources.



I can draw diagrams and produce writing using the correct vocabulary to show their understanding of climates and how it varies across the world.



I can visit a land feature eg river and describe the different features.



I can design questions and studies to conduct in the local area.

Year 4

Geographical Skills



I can identify local features on a map.



I can undertake surveys and conduct investigations.



I can choose effective recording and presentation methods eg tables to collect data.



I can present data and in a clear and appropriate way and draw conclusions from the data.



I can identify and describe the significance of the Prime/Greenwich Meridian and time zones including night and day.



I can recognise the different shapes of the continents.



I can demonstrate knowledge of features about familiar places and beyond the UK.



I know how to explain what I know about natural resources e.g. water in the locality. I know about weather patterns around parts of the world.