

London

Year Two Knowledge



The River Thames is 215 miles long and flows through Southern England, including London.



Big Ben is the name of the bell inside the Elizabeth Tower. The tower was completed in 1859.



The Houses of Parliament serves as the meeting place for the House of Commons and the House of Lords.



Buckingham Palace is the London residence of King Charles III. It has 775 rooms and the largest private garden in London.



London is the largest urban area in the UK. London covers an area of 1579 square kilometres.



London has a large tube network. My local tube station is Morden which is served by the Northern Line.



London is mainly flat with the exception of Ludgate Hill, Corn Hill and Tower Hill.



London is classed as a temperate maritime climate, which features warm summers, cool winters, no wet or dry season and often moderate to strong winds.

I Do Like To Be Beside the Seaside

Year Two Knowledge



Human features are features that have been made or changed by humans. Physical features are features that have been formed by nature.



A seaside resort has many physical features. Features such as the beach, the sea, cliffs and caves have been made naturally.



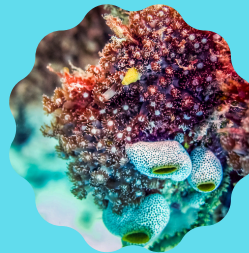
Human features found at the seaside might include the pier, the promenade, a lighthouse and a fairground. These features are all man-made.



In the UK no one lives more than 80 miles (130 km) from the seashore. The UK coastline is one of the longest in Europe.



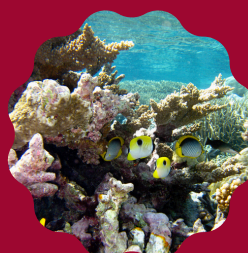
The Great Barrier Reef is a gigantic coral reef located off of Australia's North-Eastern coast. It is the world's largest natural wonder and can be seen from space. Within it there are around 3000 coral reefs and 600 islands.



A reef is made up of something we call 'stony corals'. Stony corals are themselves made up of lots and lots of little creatures called coral polyps. An individual polyp is very small, and can only grow to be about 3 millimetres.



The Great Barrier Reef was first formed around 20 million years ago, although all the current reefs are between 6000 and 8000 years old. This is because reefs continually disappear and are replaced.



Despite the fact it has lasted for millions of years, the Great Barrier Reef is not invincible. Climate change, extreme weather, more acidic water, pollution and increased competition for food are causing the Great Barrier Reef to disappear.

One World

Year Two Knowledge



The Earth has five oceans: The Atlantic Ocean, the Pacific Ocean, the Arctic Ocean, the Indian Ocean and the Southern Ocean.



Asia is the biggest continent in the world, 2/3 or the world's population live there. The World's tallest mountains, The Himalayas, are found in Asia.



Africa is the second biggest continent with 54 countries. The longest river in the world, The Nile, is found there. Africa is home to the world's biggest non-polar desert, The Sahara.



North America is the third biggest continent in the world. Major countries include the USA and Canada. North America is home to bears, moose and skunk.



South America is the fourth biggest continent in the world. It is made up of 12 countries, including Brazil and Argentina. The Amazon Rainforest is in South America.



Antarctica is the third smallest continent in the world. Antarctica is completely covered in ice, and is the coldest and windiest continent. Antarctica is surrounded by the Southern Ocean.



Europe is the second smallest continent in the world. It is the most densely populated continent and is made up of 44 countries. Western Europe has a moist and moderate climate, while Eastern Europe has cold winters and hot summers.



Australia is the smallest continent in the world. Australia is the name of the country and the continent. Australia has a lot of fertile land. More than one third of Australia is desert.

Year 2

Geographical Skills



I can use maps and a globe to identify the continents and oceans and understand that both a map and a globe show the same thing.



I can locate the continents on a paper map.



I am beginning to understand and explain the characteristics of a capital city.



I can look at photographs of a locality and compare it to my own environment.



I can observe pictures of a locality and talk about its weather, wildlife and landmarks.



I can use basic geographical vocab to refer to key physical features including beach, coast, forest, mountain, sea, river, season and weather.



I can use basic geographical vocab to refer to key human features including city, town, village, factory, farm, house and shop.



I can study maps and aerial photographs and use simple compass directions (N,S,E,W).



I can draw own maps of the local area. Use and construct a basic key.



I can observe and record the features around the school and compare them to my local area.



I can make suggestions for the cause of the differences between localities and communicate findings in different ways (reports, graphs, diagrams etc).



I can make a map of my trip to a local area.