



# Year 2



Ms McVean

Ash Class

Ms Fox

Elm Class

## Topics

Autumn 1	Autumn 2	Spring 1	Spring 2	Summer 1	Summer 2
London		Explorers		I Do Like To Be Beside the Seaside	One World



Autumn 1	Autumn 2	Spring 1	Spring 2	Summer 1	Summer 2
Claude in the City	The Dark	Bob the man on the Moon	The Way Back Home	The Storm Whale	Anna Hibiscus

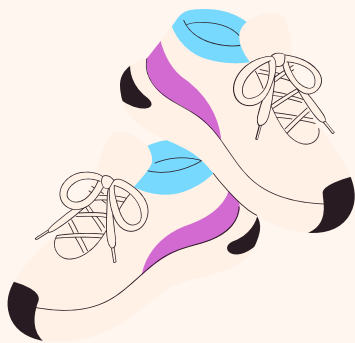
Key Texts  
in Literacy

# Home learning

Years 2: Home learning will alternate maths and literacy

For years 1 - 6 directed homework is set on Google Classroom on a Friday and handed back in the following Wednesday. We expect parents to ensure that homework is handed in on time and that it represents a child's best efforts. If you do not have access to Google Classroom and require a paper copy, please speak to the class teacher.

Reading: Children have a banded text they will bring home and change weekly. We do encourage parents to listen to their child read daily and make comments in their reading records about their child's fluency, expression or any challenges they may have.



## PE

PE days are subject to change due to Coaches. We are very fortunate to have a range of coaches throughout the year and therefore days may change term to term.

Autumn Term: Monday & Wednesday

SCAN FOR THE YEAR 2  
PAGE

FIND OUT MORE  
INFORMATION ABOUT  
YOUR YEAR GROUP

