

Autumn
term at
Hatfeild
Nursery!

Welcome to our Early Years Open Morning



PIC-COLLAGE

Admissions and settling in procedures



Nursery

- Children start the term after their 3rd Birthday (September, January, April).
- All parents attend a welcome meeting and individual phone call.
- All children are invited to a stay and play session before they start.



Admissions and settling in procedures



Reception

- Children start in the September of the academic year they turn 5.
- Contact is made with the child's current setting.
- All children are invited to two stay and play sessions.
- Induction meetings for parents/carers.





Curriculum Intent

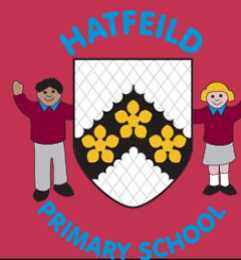


1. We believe that the Early Years Foundation Stage is crucial in securing solid foundations, in partnership with parents
2. Children who enter our EYFS develop physically, verbally, cognitively, emotionally and morally whilst embedding a positive attitude to school and learning.
3. We believe that all children deserve to be valued as an individual and we are passionate in facilitating all children to achieve their full and unique potential.
4. We adapt the learning to suit the individual's needs.

"Children learn best when they are given appropriate responsibility, allowed to make errors, decisions and choices, and respected as autonomous learners."

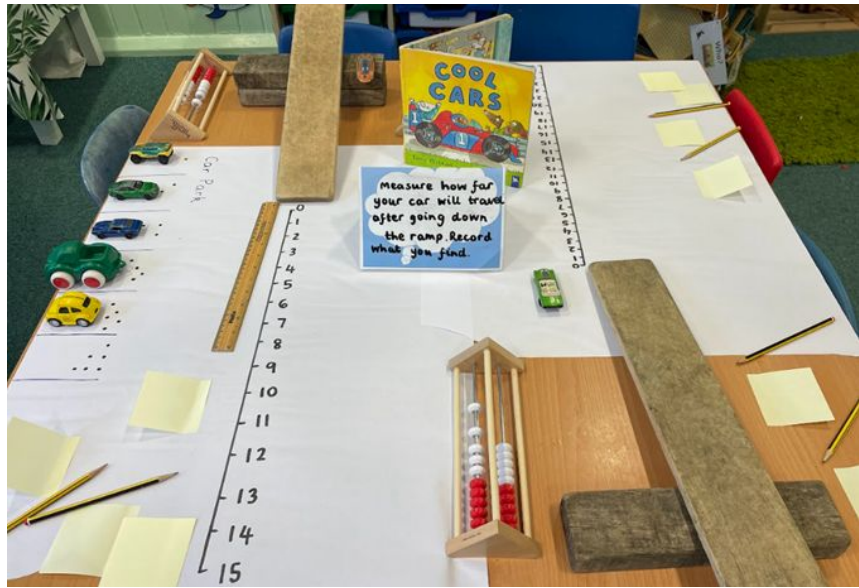


Characteristics of Learning



The Characteristics of effective learning





Learning through play



Prime Areas



- At Hatfeild we work on a broad range of creative themes in line with the Development Matters Guidance 2021

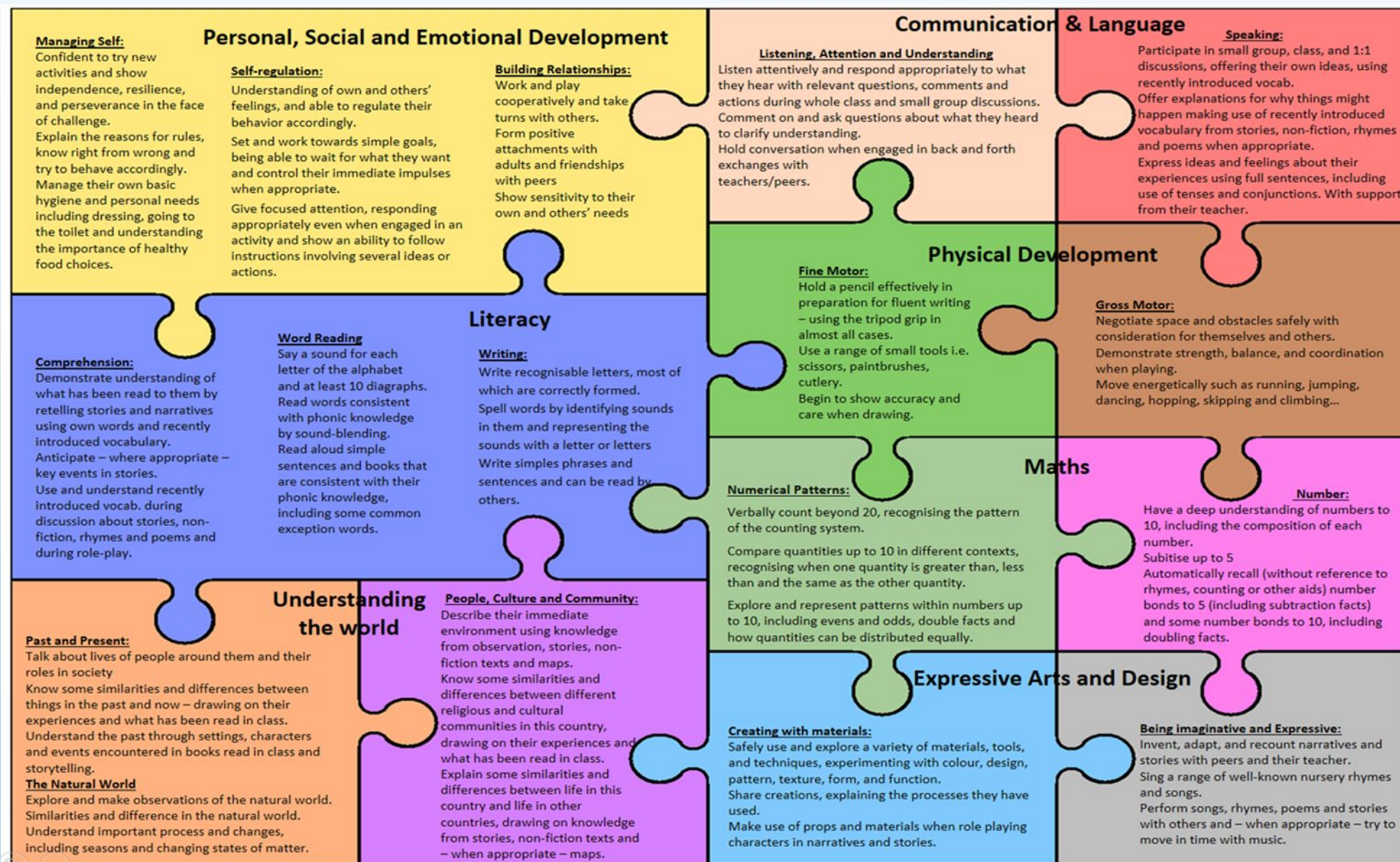
Area of Learning and Development	Aspect
Prime Areas	
Personal, Social and Emotional Development	Making Relationship Self-confidence and self-awareness Managing feelings and behaviour
Physical Development	Moving and handling Health and self-care
Communication & Language	Listening and attention Understanding Speaking



Specific Areas



Area of Learning and Development	Aspect
Specific Areas	
Literacy	Reading Writing
Mathematics	Numbers Shape, space and measures
Understanding the World	People and Communities The World Technology
Expressive Arts and Design	Exploring and using media materials Being imaginative





The Nursery Day



Morning Nursery

Starts at 8:45am
Finishes at 11:45am

Afternoon Nursery

Starts at 12:15pm
Finishes at 3:15pm

Full Time Nursery

Starts at 8:45am
Finishes at 3:15pm

For any children who take longer to settle in September we will agree a shortened session time with you.



A day at school



Group Time



Indoor Free Flow Play

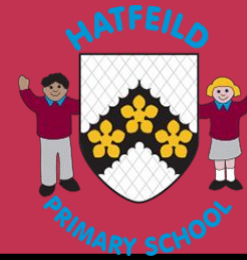


Outdoor Play





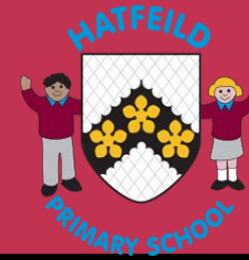
Parent Partnership



- We recognise parents are children's first and most enduring educators and when we work together it has a positive impact on children's development and learning.
- We have an open door policy, please speak to a member of staff if you have any concerns.
- You will be invited to parent conferences to discuss your child's learning and development.
- Please use Evidence Me as a means of communicating your child's learning at home, we are always excited to see what the children are learning outside of the setting and these will be added to your child's learning profile.



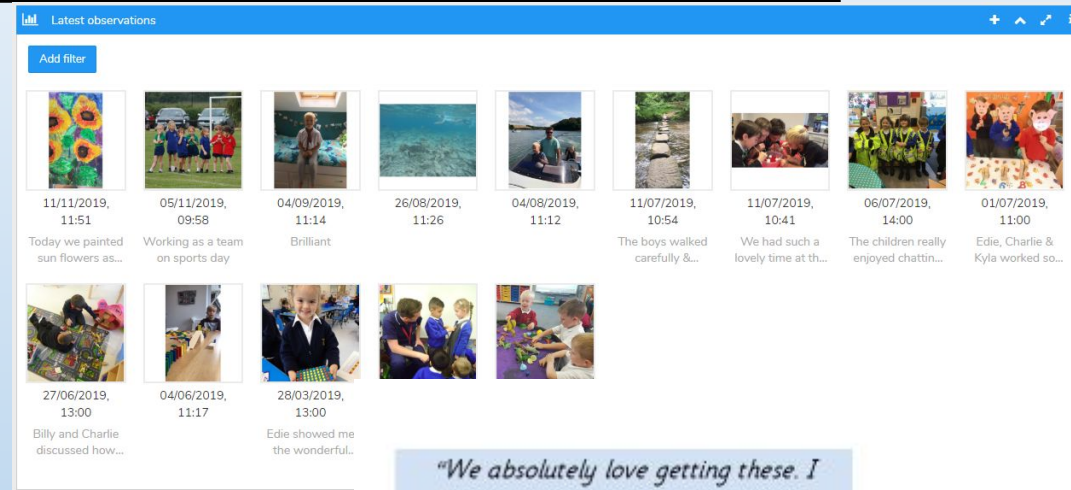
Evidence Me



Evidence Me is our virtual learning platform. This is what we use in class to communicate information via weekly newsletters, messages and reminders as well as information on how to support your child at home.

This is also an essential tool for you to see and respond to what your child is doing in the classroom as their observations will be uploaded to their profile and sent out to you on a weekly basis.

This platform also offers you the opportunity to upload observations of learning that is taking place at home.



"We absolutely love getting these. I forward them onto my parents and parents in law (who live in another country). Thank you so much for all your hard work on them."

"I think it is really useful tool to see how (...) is progressing on a regular basis and easy to email pictures/videos of things (...) does at home or out and about. Thank you."

"I love hearing the reports by email. I always laugh and share the observations with family. It gives me an opportunity to be a 'fly on the wall' into their school life as they always say they 'can't remember what they did.'"



30 Hour Offer



The additional hours will be available to children in families where:

both parents are working (or the sole parent is working in a lone parent family)

each parent earns, on average, a weekly minimum equivalent to 16 hours at national minimum wage (NMW) or national living wage (NLW), and less than £100,000 per year.

it is a one parent household and the working parent meets the income rules.

Working will include employed and self-employed persons.

The screenshot shows the GOV.UK website interface. At the top is the GOV.UK logo and a search bar. Below the header, a navigation bar indicates the current page is about 'Coronavirus (COVID-19) | Rules, guidance and support'. The main content area is titled 'Part of Get 30 hours free childcare: step by step'. The section heading is '30 hours free childcare'. Below this, it states 'You may be able to get 30 hours free childcare if:' followed by a bulleted list: 'you live in England' and 'your child is 3 to 4 years old'. It then says 'There are:' followed by two links: 'different schemes in Scotland' and 'different schemes in Wales'. On the right side, there is a 'Part of' section with a link to 'Get 30 hours free childcare: step by step', a 'Show all steps' button, and a numbered step indicator '1 Check you're eligible' with a 'Hide' button.



Browser tabs: Hatfield Primary School - Early, Hatfield Primary School - About, Hatfield Primary School - About, Awarded synonyms - Google S, +

Address bar: <https://hatfieldprimaryschool.oww2.juniperwebsites.co.uk/?login=true&postLogin=true>

Navigation: HOME CREATE EDIT WEBSITE ADD-ONS HELP LOGOUT

Tools: Save Delete Main IV _Hidden_Area_ Title About Our School Sort Share Archiving Security Comments SEO Custom Fields

Menu: About Us Key Information News and Events Children Learning & Enrichment Parents & Community

Hero Image: A collage of children's drawings featuring trees, flowers, and landscapes.

Text: **A Place to Grow
Flourish at Hatfeild**

Buttons: Support, DISCOVER MORE

Footer: Lorem ipsum dolor sit amet, consectetur adipiscing elit. Sed ego in hoc resisto; Dolor er